

**This Week In
Sunday Worship**

9:00 & 11:15 am
"Persevering to the End"
Matthew 5:10-12
Rev. Dr. Charles
Keyworth

Attendance
Sunday, February 1
9:00 am - 261
11:15 am - 188

**Upcoming
Bulletin
Deadlines**

- **March 1 issue**
due Wed., Feb. 18
- **March 8 issue**
due Wed., Feb. 25

e-mail your information
by noon on the
due date to
[announcements@
fumcmid.org](mailto:announcements@fumcmid.org)

**Sunday Morning
Worship Broadcasts**

MCTV
Charter- 191
AT&T U-verse - 99
1:00 PM on Tuesdays
9:30 PM on Thursdays
WMPX (1490 AM) Radio
11:00 AM each Sunday

Midland First United Methodist Church

WEEKLY ANNOUNCEMENTS

Volume 41, Issue 7

February 15, 2015

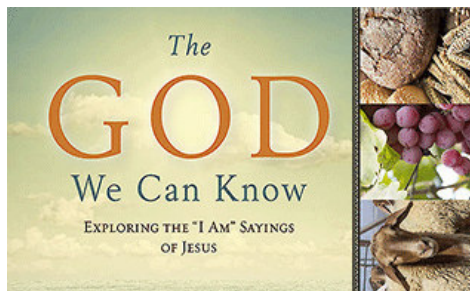


Wed., February 18
7:00 pm | Sanctuary
(Holy Communion served)
"Following the Great 'I AM'!"
Exodus 3:1-14; Luke 9:51
Rev. Dr. Charles Keyworth
(Childcare available in
Nursery & P4)

Coming this Lent:

The God We Can Know
Lenten Study and Sermon Series 2015

Through this study and sermon series, beginning with Chapter One on Ash Wednesday and continuing on through the Sundays of Lent, we will explore the "I AM" sayings of Jesus found in the Gospel of John. Each chapter of Rev. Rob Fuquay's book includes scripture commentary and stories to help connect the "I AM" sayings to your life. During the Sunday School hour you will be able to watch the study DVD, which takes you on a journey through the Holy Land to see the places where Jesus stood as he disclosed his identity as the "I AM." Books are available on the desk in the office area or in the Chapel during the Sunday School hour.



Coming in Worship

Worship - 9:00 AM | Worship & Praise - 11:15 AM | Sanctuary

"I AM" Lenten Sermon Series

February 22 "I AM the Light of the World" Rev. Dr. J. D. Landis
1st Sun. of Lent John 7:2,14; 8:12

March 1 "I AM the Bread of Life" Rev. Dr. Charles Keyworth
 John 6:29-35, 48-50

Mid-Week Worship | 7:00 PM | Chapel

February 25 Lenten Program - Talent Showcase

March 4 Rev. Dr. J. D. Landis



Hearing Loop
 Switch hearing aid to T-coil

Hearing assistance is available during worship

services. For the hearing impaired, FUMC offers a loop system. Hearing aid and cochlear implant wearers with a telecoil setting can hear the service broadcast directly through their hearing aids. Others desiring hearing assistance may check out a portable receiver and headset from an usher.



Family Lenten Fair

Sun., February 22 | 12:30 - 2:30 pm
Fellowship Hall

12:30 - 1:00 pm, Lunch
 1:00 - 2:00 pm, Crafts & Games
 2:00 - 2:30 pm, Worship

Lunch menu: taco/nacho bar, dessert, and drinks
 Cost: \$4 each

RSVP to Marcia, mpayne@fumcmid.org or 835.6797
ext. 118, by Thursday, February 19.

Childcare available in the Nursery during crafts and worship.

WELCOME NEW STAFF MEMBERS

The Pastor/Staff Parish Relations Committee is pleased to announce two new staff members, Kathleen Van Pelt and Leslie Hiltunen.

Kathleen joined our custodial team on January 12, 2015. She comes to FUMC with 13 years of custodial experience with SVSU. Kathleen's basic schedule is 4:30 – 10:00 pm weekdays, and building lock up on Saturday and Sundays.

Leslie joined FUMC's office staff on January 21, 2015 as our new bookkeeper. Having served in this same capacity with Auburn UMC, we are blessed to have Leslie join our team. Leslie's office hours are Monday through Friday from 9:00 am to 3:00 pm, with flex-hours during the summer months.

Please join us in welcoming both Leslie and Kathleen as a part of FUMC ministries.

Talent Showcase!

**Wednesday, February 25
7:00 pm | Sanctuary**



Individuals or groups from our church are encouraged to participate in this first of our Wednesday Lenten programs. This evening will not be limited to music, but could also include dramatic readings, choreography, mime, comedy, juggling, or something else. Creativity and originality are encouraged, and all ages are welcome to apply! Material does not need to be Lenten themed or specifically religious in nature, but should be family-friendly and appropriate for a church setting.

Auditions are scheduled for Sunday, February 15 from 2:00 - 4:00 pm in the Sanctuary. The program running time is limited to 60 minutes, so items around five minutes long are preferable, with ten minutes being the maximum. "Self-contained" acts that include their own accompanist or do not need additional support are highly encouraged.

For more details, or to apply, contact Jantz Black, Director of Music Ministries, jblack@fumcmid.org, or 835.6797 ext. 137.

When life is rough
PRAY.
 When life is great
PRAY.
QUOTEDIARY . . .

New Weekly Prayer Meeting

Everyone is invited to join Rev. Jung Eun Yum in the **Chapel on Fridays, from 8:15 to about 8:45 am.** There will be a time of singing, a short message, and group and personal prayer. What a great way to end your work week, and start your weekend.

DO WE HAVE YOUR CORRECT EMAIL ADDRESS?



In an effort to keep our records updated, please notify us if your email (or home address or phone number) changes.

Have you given the church your email address, but haven't been receiving any messages from the office? Please let us know so we can correct the problem.

Please submit your information to Teri in the church office, 835.6797 ext. 120 or tbeasley@fumcmid.org.

Community Prayer Group

Thursdays | 12:10 to 12:50 pm | FUMC Sanctuary Balcony

Please come and pray. The focus is 2 Chronicles 7:14 ~ to repent and turn to God asking Him to "heal our community."

*"If my people, who are called by my name, will humble themselves and pray and seek my face and turn from their wicked ways, **then** will I hear from heaven and will forgive their sin and will heal their land."
 (2 Chronicles 7:14).*

Our church is a handicap accessible facility. Parking for the handicapped is available in three areas around the church: on Main Street, on Fitzhugh Street, and in the parking lot across Larkin Street. You can avoid using steps by using the exterior ramp at the Fitzhugh entrance or by entering from Larkin and using the interior ramp. Also, a reminder to use handrails when using steps, especially exterior steps that may be slippery in bad weather.



Fellowship Unlimited



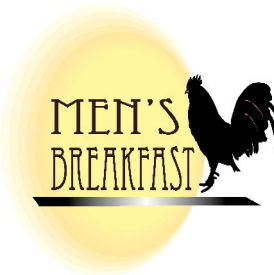
Saturday, February 21 | 6:00 - 8:30 pm
Upper Room at Journey's Coffee House, Main St.

Please bring appetizers and desserts to share. I can personally vouch for the wonderful drinks available there! As a group, we will be playing a game that should be fun for all.

Please RSVP to Sherry Goff at 600-7420 or leave a message at 631-2397. Barclay and I are looking forward to seeing you there!

UNITED METHODIST MEN

Saturday, February 21 | 7:30 - 9:00 am
Hearth Rm.
 Program provided by Christy Miller-Black,
 FUMC Director of Discipleship



FUMC Bridge Group

Tues., February 24 ♣ 7:00 - 9:30 pm
FUMC Parlor

The Bridge Group meets monthly. All level of players are invited! Friends are welcome. For more information, contact Kay Cargile, 835.6797 ext. 144 or kcargile@fumcmid.org.

Altar Flowers



If you would like to purchase altar flowers for 2015 (\$35), and dedicate them in memory or in honor of a loved one, please contact Tonya in the church office, 835.6797 ext. 110, or tsimons@fumcmid.org. There are still many dates available.



VIM Rio Bravo, Mexico

March 14-21, 2015

and/or

March 21-28, 2015

(You can go for either one week or both.)

There is still plenty of room to join us. Cost is \$350/week, which covers all expenses while in Mexico. You are responsible for the transportation cost to/from McAllen, TX International Airport.

Besides good food and fellowship on this trip, we will be working on the following projects: building a cement block casita (which costs \$2,500); teaching sewing; cooking and Bible classes; minor repairs at local churches and homes.

We are still trying to raise funds to offset the cost of materials and transportation of donated items, and are in need of \$1,300.

Your prayers and support are greatly appreciated.

For more information, please contact Nancy Hill, 989.859.7368.

**SAVE
THE
DATE**

TREKKERS "MINI-TREK"

Butterflies & da Vinci

Dow Gardens &

Midland Center for the Arts

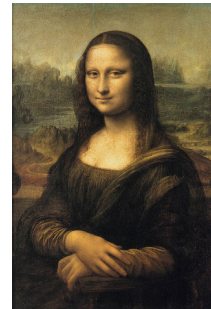
Friday, March 27

11:00: Butterfly Exhibit

12:15 pm: Lunch

12:45 pm : da Vinci Tour

Cost: \$17



Sign up with Marcia in the church office,
mpayne@fumcmid.org or 835.6797 ext. 118.

Contact Kay Cargile, kcargile@fumcmid.org, or
835.6797 ext. 144, if you have questions.



Middle Schoolers, please join us in Middle Ground this week for lots of fun at United Methodist Youth Fellowship!

6:00 - 7:15 pm Evening Activities in Middle Ground
 7:15 - 7:30 pm Devotions in Chapel

Upcoming Activities:

Feb. 15 - Come dressed for the weather....we may be walking a little tonight after we play a few fun games

Feb. 21-22 – FAITHJAM (Hope you signed up!)

Feb. 22 – Noon - 2:30 pm– If we didn't wear you out from FaithJam, please come help run a craft table at the Lenten Fair!

Contact Becky Jenkins, 835.6797 ext. 114 or bjenkins@fumcmid.org, if you have any questions.



Sr. High Youth, please join us each Sunday for United Methodist Youth Fellowship!

5:45 - 6:00 pm Bible Study in Sr. High Lounge
 6:00 - 6:30 pm Worship & BUOY Groups in Chapel
 6:30 - 7:30 pm Activity (location varies)

Feb. 15 - Deliver Valentines

Friday, Feb. 20 – Sunday, Feb. 22 FaithJam – Thank you to those who volunteered. We are looking forward to this time with our Middle Schoolers

Contact John Engler, 835.6797 ext. 112 or jengler@fumcmid.org, if you have any questions.



February 19 - International Global Missions

Dress: Global clothing

Menu: International Food Court: hummus and veggies, chicken fried rice, egg rolls, chicken gyros, pineapple cake



*Open Hearts.
Open Minds.
Open Doors.*



*We are a dynamic faith community,
seeking to follow Christ's example of loving God,
nurturing one another, and serving the world.*

**First United Methodist Church
315 W. Larkin, Midland, Michigan 48640
Office: 989-835-6797 ♦ Fax: 989-835-8935
www.fumcmidweb.org**

Staff Phone Extensions and E-mail Addresses

Senior Pastor - Rev. Dr. J. D. Landis.....	117	jdlandis@fumcmid.org
Assoc. Pastor - Rev. Dr. Charles Keyworth.....	111	ckeyworth@fumcmid.org
Assoc. Pastor - Rev. Jung Eun Yum.....	145	jeyum@fumcmid.org
Director of Youth Ministry - John Engler	112	jengler@fumcmid.org
Director of Discipleship - Christy Miller-Black	142	cblack@fumcmid.org
Children's Ministries - Abby Shephard	113	ashephard@fumcmid.org
Children's & Youth Ministries - Becky Jenkins	114	bjenkins@fumcmid.org
Director of Music Ministries/Organist - Jantz Black. 137.....		jblack@fumcmid.org
Community Assistance - Lynnette.....	835-8935	
Office Manager - Tonya Simons.....	110	tsimons@fumcmid.org
Discipleship Team Admin. Asst. - Marcia Payne	118	mpayne@fumcmid.org
Membership/Music Admin. Asst. - Teri Beasley.....	120	tbeasley@fumcmid.org
Bookkeeper - Leslie Hiltunen.....	116	lhiltunen@fumcmid.org
Volunteer Ministries - Jean Scroggin	126	jscroggin@fumcmid.org
Director of Older Adult Ministry - Kay Cargile	144	kcargile@fumcmid.org
Building Supervisor - Rob Grocholski	121	rgrocholski@fumcmid.org
LOGOS - Jennifer Lane.....	129	jlane@fumcmid.org
Library	135	
Kitchen	131	
Youth Center	128	
Nursery.....	140	
Sound Ministry - Tom Randolph... ..		tarandol@yahoo.com
Video Ministry - Dennis Strahl.....		.FUMCVideoMinistry@yahoo.com
Bulletin Announcements - Jennifer Klingler.....		announcements@fumcmid.org
Prayer Requests.....		prayer@fumcmid.org
Website Manager - Jennifer Klingler.....		jklingler@fumcmid.org

Revival



WEEK SIX: FEBRUARY 15, 2015
REV. DR. CHARLES KEYWORTH, PREACHING

Order of Worship - 9:00 AM

February 15, 2015

Liturgist: Christy Miller-Black

GREETINGS & SHARING OF ANNOUNCEMENTS

Preparation for Worship is a signal to end our conversations and prepare our hearts for worship.

PRELUDE "A Charge to Keep I Have" arr. G. Young
Jantz Black, organist

***CONGREGATIONAL INTROIT** "Surely the Presence of the Lord" #328

*CALL TO WORSHIP

Leader: It is good to gather to worship and to give God our thanks and praise.

People: We will remember God's goodness and grace that has been poured out upon our lives!

Leader: Let us declare God's steadfast love in the morning, and God's faithfulness by night!

People: We will journey day by day into the future with the assurance and confidence of God's presence, guidance, and strength to persevere in faith all of our days.

***OPENING HYMN** "And Are We Yet Alive" #553

UNISON PRAYER

Almighty and everlasting God, in whom we live and move and have our being; You have created us for yourself, so that our hearts are restless until they find rest in you. Grant us such purity of heart and strength of purpose, that no selfish passion may hinder us from knowing your will and no weakness from doing it. In you, may we see life more clearly, and in your service may we find true joy and peace. Give us the courage to live for you each and every day of our lives. For we ask this in Jesus' name. Amen.

ANTHEM "Amazing Grace" K. McChesney
Carillon Choir - Jantz Black, director; Connie Cabelka, piano

PASTORAL PRAYER & THE LORD'S PRAYER

"Our Father, who art in heaven, hallowed be thy name. Thy kingdom come, thy will be done on earth as it is in heaven. Give us this day our daily bread. And forgive us our trespasses, as we forgive those who trespass against us. And lead us not into temptation, but deliver us from evil. For thine is the kingdom, and the power, and the glory forever. Amen."

OFFERING OF TITHES & GIFTS

Offertory "O Jesus, I Have Promised" arr. E. L. Diemer
 *Doxology "Praise God, from Whom All Blessings Flow" #94
 *Prayer of Dedication

***HYMN** "A Charge to Keep I Have" #413
 (The children are invited to come forward during the last stanza.)

CHILDREN'S TIME Christy Miller-Black

READING OF THE WORD

The Call to Scripture "Thy Word Is a Lamp" (refrain only) #601
 Scripture Reading Matthew 5:10-12
 Leader: The word of God for the people of God.
People: Thanks be to God.

SERMON "Persevering to the End" Rev. Dr. Charles Keyworth

***HYMN** "O Jesus, I Have Promised" #396

***BENEDICTION & RESPONSE** "Seek Ye First" (stanza 1) #405

***POSTLUDE**

***Worshippers standing, if able**



Worship and Praise - 11:15 AM

ANNOUNCEMENTS & WELCOME

WORSHIP SONGS "All Things Are Possible"
 "Beautiful Things"

PRAYER Rev. Jung Eun Yum

SPECIAL MUSIC "Amazing Grace" K. McChesney
Carillon Choir - Jantz Black, director; Connie Cabelka, piano

OFFERING "I Will Follow" C. Tomlin

WORSHIP SONG "In Christ Alone (with The Solid Rock)"

CHILDREN'S TIME Christy Miller-Black

SCRIPTURE Matthew 5:10-12

MESSAGE "Persevering to the End" Rev. Dr. Charles Keyworth

CLOSING SONG "I Will Follow"

SENDING OUT

Welcome Visitors: We hope you enjoyed worshiping with us, as it is our hope and prayer that you find the presence of God here and a spirit of friendliness and warmth. We invite you to join us for refreshments between services in Fellowship Hall, located downstairs, directly below the Sanctuary.

If you would like to learn more about our church, please visit our Welcome Center located in the Parlor, which is adjacent to the entry area of the Sanctuary.

Sympathy and prayers for Brenda, Tom, Josh, and Hannah Frazier, on the death of Rose Daniels, Brenda's mother, and Josh and Hannah's grandmother, on January 31.

Adult Sunday School - 10:15 am

God Heard Their Cry, Rm. 36; **Making Sense of the Bible**, Rm. 10;
Revival: Faith as Wesley Lived It, Chapel; **The Book of John**, Rm. 6;
Membership Class, Conference Rm. ; **Forum Class**, Hearth Rm.

Children/Youth Sunday School

9:00 am

Nursery, Ark Room, Pre-K - Rooms P1-P4 (starting at 8:45 am)
Grades K-5: Worship in the Little Theater after Children's Time

10:15 am

Sunday School for All Ages: Pre-K & Nursery, Preschool Wing; Ark Rm., P3;
K-5th grade, drop off and pick up in Little Theater

Sr. High - Revival Series, Sr. High Lounge

Middle School - Revival Series, Middle Ground

11:15 am

Nursery, Ark Room, Pre-K - Rooms P1, P3, P4 (starting at 11:00 am)
Grades K-5: Worship in the Little Theater after Children's Time

FOR YOUR INFORMATION

Midland FUMC is a Stephen Ministry Congregation

A cry room (Parlor) is available. Please see an usher for assistance.

Hearing assistance is available, please see an usher for details.

Portable footstools are available; please see an usher.

Prayer request cards in the pew racks are for your convenience in making prayer requests. You may place the cards in the offering plate.

The loose coins in the offering plate today and every Sunday are designated for areas of hunger in Midland County and around the world.

Large Print Bulletins, Hymnals, and Announcement Bulletins are available from an usher.